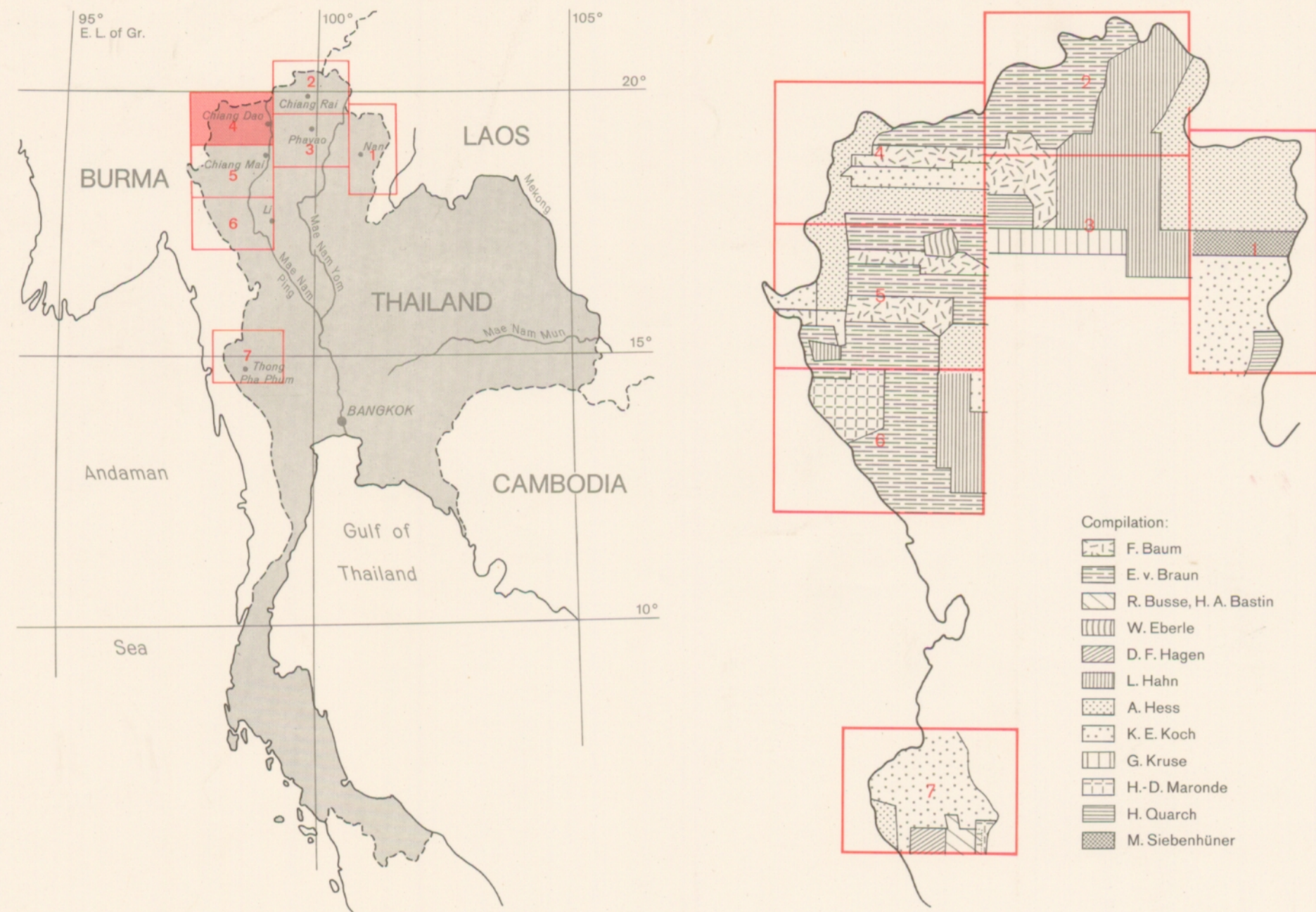


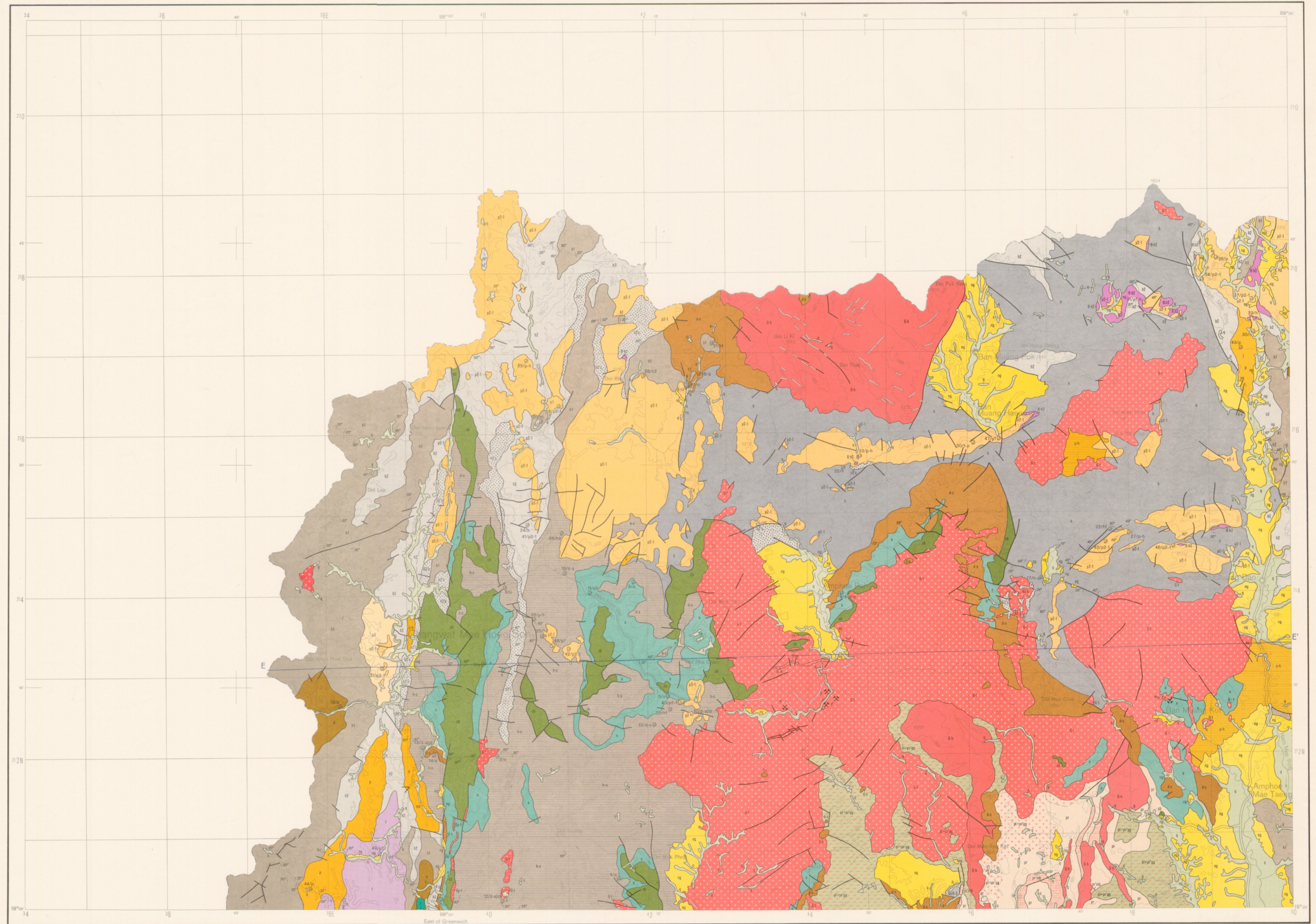
Geological Map of Northern Thailand 1 : 250000
Compiled by A. Hess and K. E. Koch



- Compilation:
- F. Baum
 - E. v. Braun
 - R. Busse, H. A. Basin
 - W. Eberle
 - D. F. Hagen
 - L. Hahn
 - A. Hess
 - K. E. Koch
 - G. Kruse
 - H.-D. Maronde
 - H. Ouarch
 - M. Siebenhüner

Geological mapping field work by GGM: F. Baum, E. v. Braun, A. Hess, and K. E. Koch, and DMR Geological Survey Division: Adul Charonpravat, Phisit Dheeradiok, Sanarn Sumeliphong, Thanit Suwanari, Veerasak Nakinbodee, Vichai Sivabovorn, and Virat Mahakaphongsee

- Altitude in m
- Contour lines in m
- International boundary
- Settlement (over 10,000 inh.)
- Settlement (less than 10,000 inh.)
- All-weather road
- Fair-weather road
- Flow direction
- Sink hole
- Dike
- Fault
- Reverse and thrust faults
- Normal fault
- Strike-slip fault
- Strike and dip
- Overturned
- Mine, active
- Mine, inactive
- Fossil locality
- Thermal spring
- Slag
- Line of section



Topographical base: Thailand 1:50,000; First AMS Editions RTSD1, 1965 (printed by Royal Thai Survey Department); Indochina and Thailand 1:250,000, US Army Map Service, Fir East, 1964
Lithography and printing: Erich Hornung, Kartographische Anstalt, D-3005 Hemmingen 1
Hannover 1979

© Federal Institute for Geosciences and Natural Resources
printed in Germany (Federal Republic), 1979; Cartography: S. Grötsch
Sale: Geo Center, Box 80/0830, D-7000 Stuttgart 80

Age	Sediments		Volcanics		Plutonics	
	Symbol	Code	Symbol	Code	Symbol	Code
Neozoic	Holocene	1				
	Quaternary	1				
	Pleistocene	1				
Tertiary	Neogene	2				
	Paleogene	2				
Mesozoic	Cretaceous	3				
	Jurassic	4				
	Upper	4				
	Middle	4				
	Lower	4				
	Triassic	5				
Paleozoic	Upper	6				
	Middle	6				
	Lower	6				
	Carboniferous	7				
	Upper	7				
	Lower	7				
Devonian	8					
Silurian	9					
Ordovician	10					
Cambrian	11					
Precambrian	12					

Facies: gr gravel, s sand, ss sandstone, sh shale, ls limestone, ch chert, sl slate, pgn paragneiss, cg conglomerate, gw greywacke, mb marble, tl tuff

Only those formations that appear in the region covered by this sheet are coloured in the legend.

