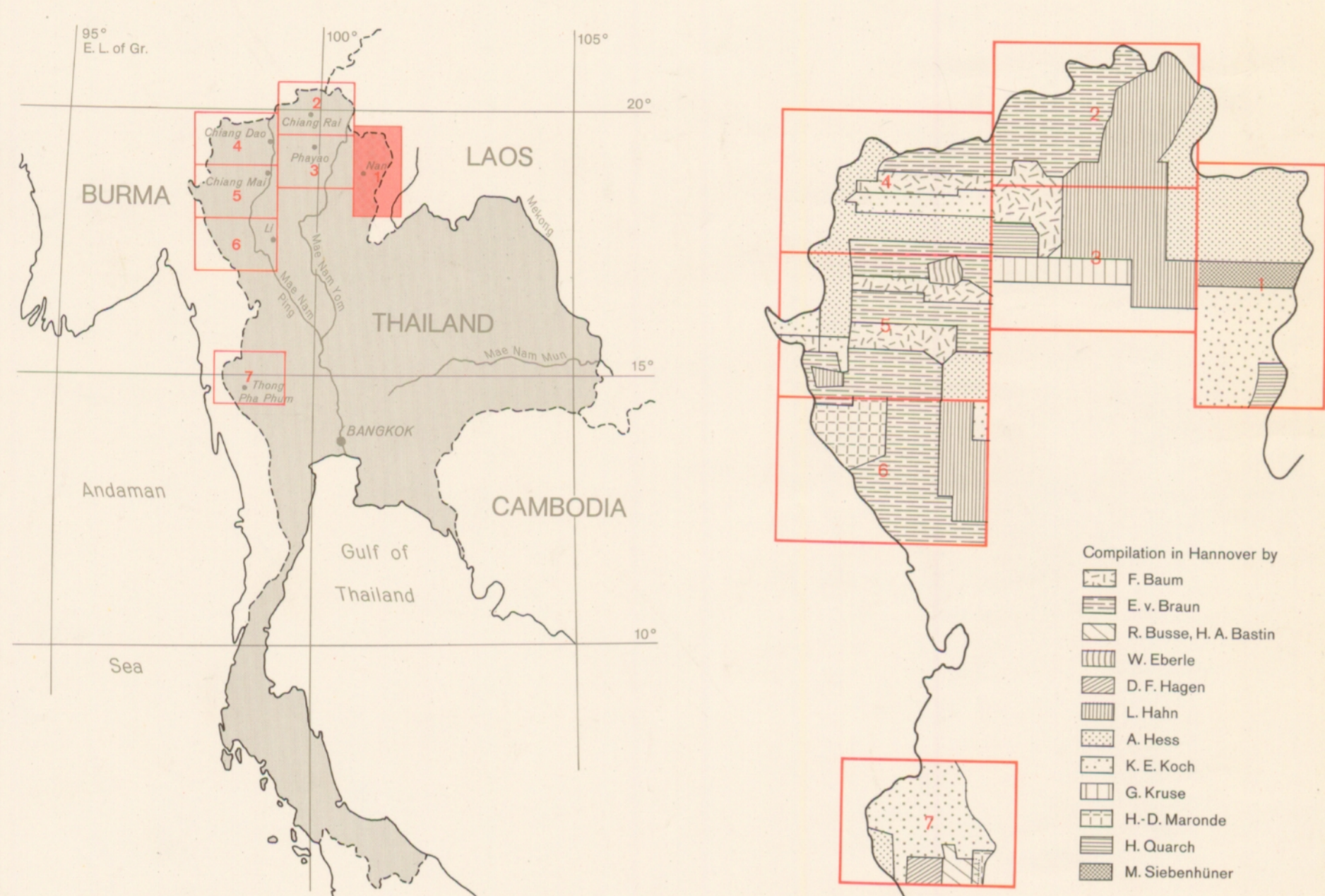


Geological Map of Northern Thailand 1:250000

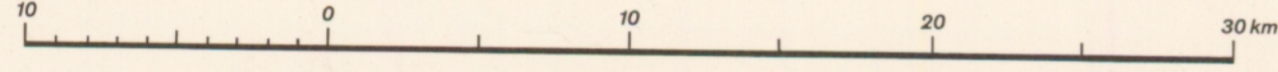
Compiled by A. Hess and K. E. Koch

Prepared by German Geological Mission in Thailand
in cooperation with Geological Survey Division Department of Mineral Resources
Published by Federal Institute for Geosciences and Natural Resources



Geological mapping done by GGM (see above) in close cooperation with DMR, Geological Survey Division. Head: Kasat Pitakpaivan
 Adjul Charoenpravat Nikom Chungsusuk Sawad Chumviset Vivat Pajitrapaporn
 Bancha Samnupapwin Nopadol Manthajit Sutthap Sriak Vorakul Kasryana
 Chaiyan Hinthong Phisit Dheeradolok Thasit Suwarsri Wanchai Nitayawana
 Chamrat Mahavaj Saengathit Chueviraj Veerasak Nakinbodee Watanachai Boonyakiat
 Chonggan Chonlukmanee Sakda Booyigitanond Vichai Svabornom Wirat Mahakaphongse
 Montri Silapitri Sanarn Suensilpong Visit Sripanawat Yongyuth Trangkochasan

Hannover 1975



Transverse Mercator Projection

Topographical base: Thailand 1:50000; First AMS Editions RTS/D 1, 1965 (printed by Royal Thai Survey Department); Indochina and Thailand 1:250000, US Army Map Service Far East, 1964

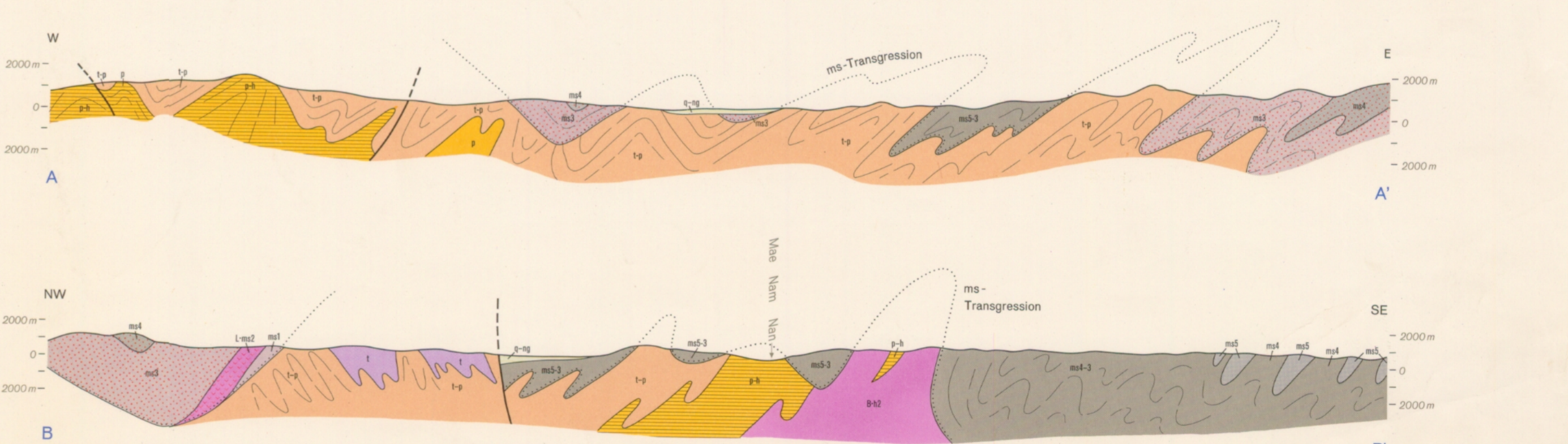
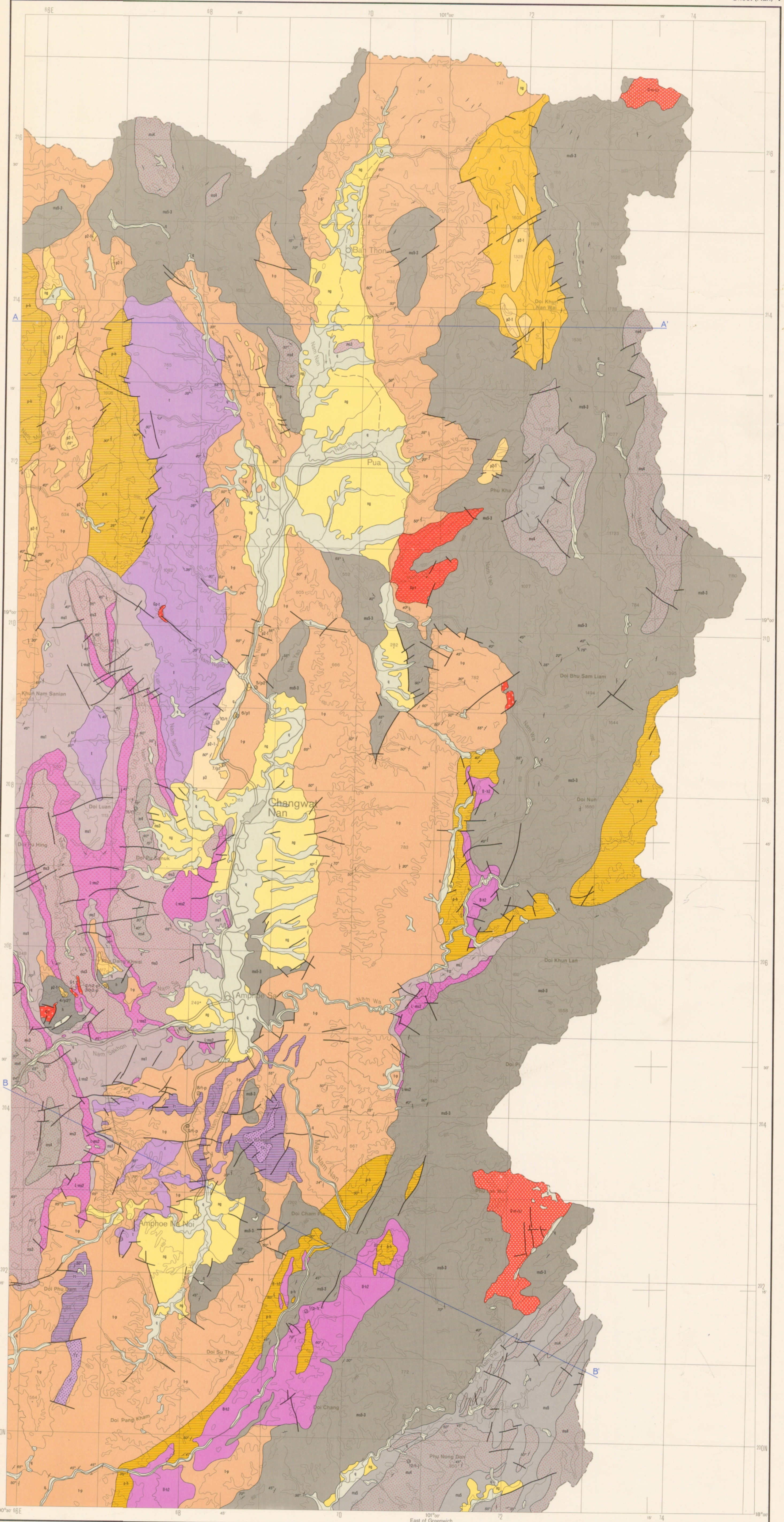
Cartography: S. Grätsch

Lithography and printing: Erich Hornung, Kartographische Anstalt, D-3005 Hammingen 1

© Federal Institute for Geosciences and Natural Resources
printed in Germany (Federal Republic) 1975
Sale: Geo Center, Box 80 0830, D-7000 Stuttgart 80



Age	Facies		Volcanics		Plutonics	
	Symbol	Code	Symbol	Code	Symbol	Code
Neozoic	Holocene	h1				
	Quaternary	q1				
	Pleistocene	pl1				
Tertiary	Neogene	ng1				
	Paleogene	pg1				
Mesozoic	Cretaceous					
	Jurassic					
Triassic	Upper	t1				
	Middle	t2				
	Lower	t3				
Permian	Upper	p1				
	Middle	p2				
	Lower	p3				
Paleozoic	Carboniferous	Upper	c1			
		Lower	c2			
	Devonian					
	Silurian					
	Ordovician					
Cambrian						
Precambrian						



Only those formations that appear in the region covered by this sheet are coloured in the legend.