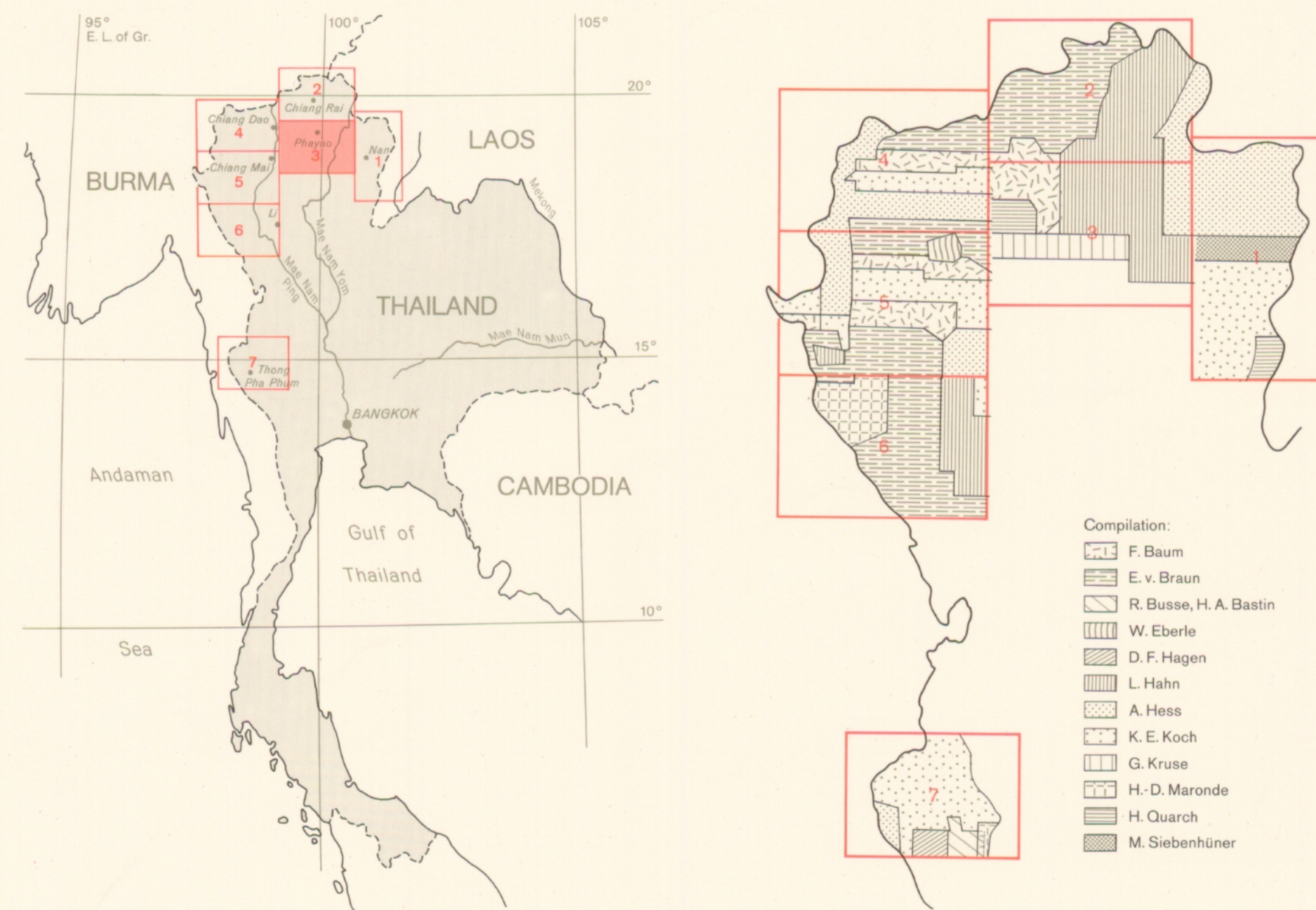


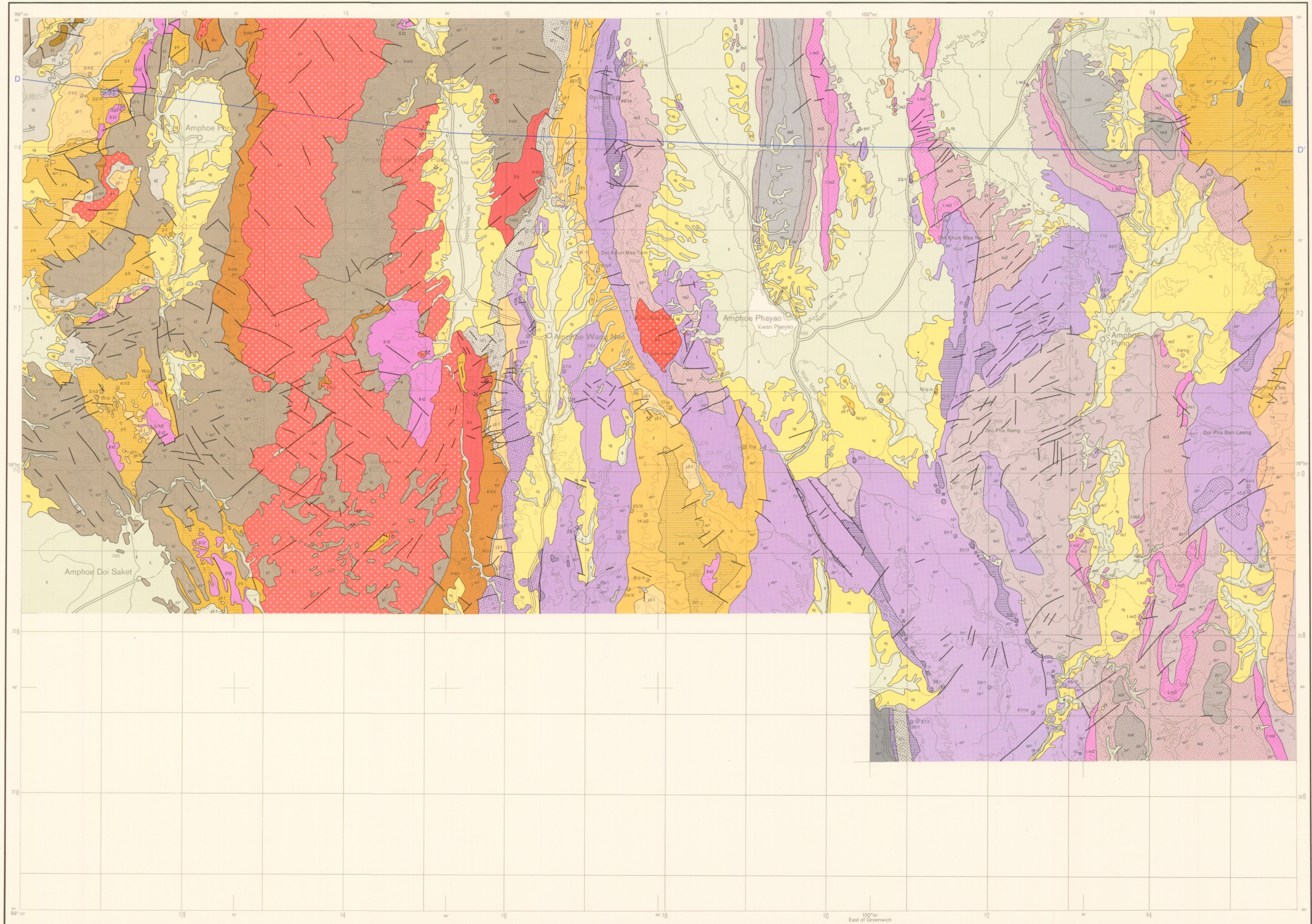
Geological Map of Northern Thailand 1 : 250000

Compiled by F. Baum and L. Hahn

Prepared by German Geological Mission in Thailand
In cooperation with Geological Survey Division Department of Mineral Resources
Published by Federal Institute for Geosciences and Natural Resources



Geological mapping field work by GGM: F. Baum, A. Hess, L. Hahn, G. Kruse, H. Quarch and DMR, Geological Survey Division: Chaiyarn Hinthong, Sanarm Suensilpong, Saengathit Chueviraj, Vichai Sivabornvorn



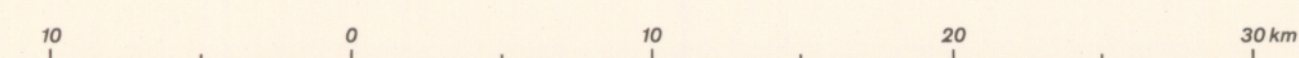
Age	Sediments	Volcanics	Plutonics	
Neozoic	Holocene			
	Quaternary	q1		
	Pleistocene	q2		
Tertiary	Neogene	ng1, ng2, ng3		
	Paleogene		g1, g2	
Mesozoic	Cretaceous		g1, g2	
	Jurassic	j1, j2		
	Triassic	Upper	tr1, tr2	
		Middle		
	Lower	Lower		
Upper				
Paleozoic	Permian	Middle		
		Lower		
	Carboniferous	Upper		
Lower				
Devonian				
Silurian				
Ordovician				
Cambrian				
Precambrian				

Facies: gr gravel, ss sandstone, ss sh shale, ls limestone, ch chert, sl slate, pgn paragneiss, cg conglomerate, gw greywacke, mb marble, ff tuff

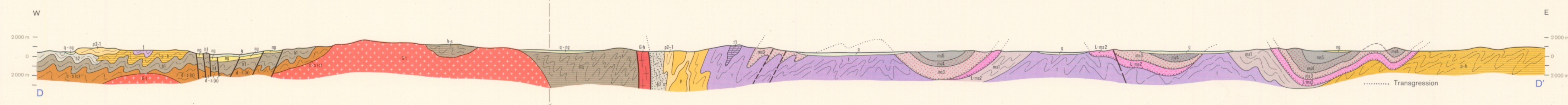
Only those formations that appear in the region covered by this sheet are coloured in the legend.

Topographical base: Thailand 1:50 000; First AMS Edition: RTSD1, 1965 (printed by Royal Thai Survey Department); Indochina and Thailand 1:250 000, US Army Map Service Far East, 1964
Lithography and printing: Erich Hornung, Kartographische Anstalt, D-3005 Hemmingen 1

Hannover 1977



Transverse Mercator Projection



© Federal Institute for Geosciences and Natural Resources
printed in Germany (Federal Republic), 1977; Cartography: S. Grösch
Sale: Geo Center, Box 800830, D-7000 Stuttgart 80