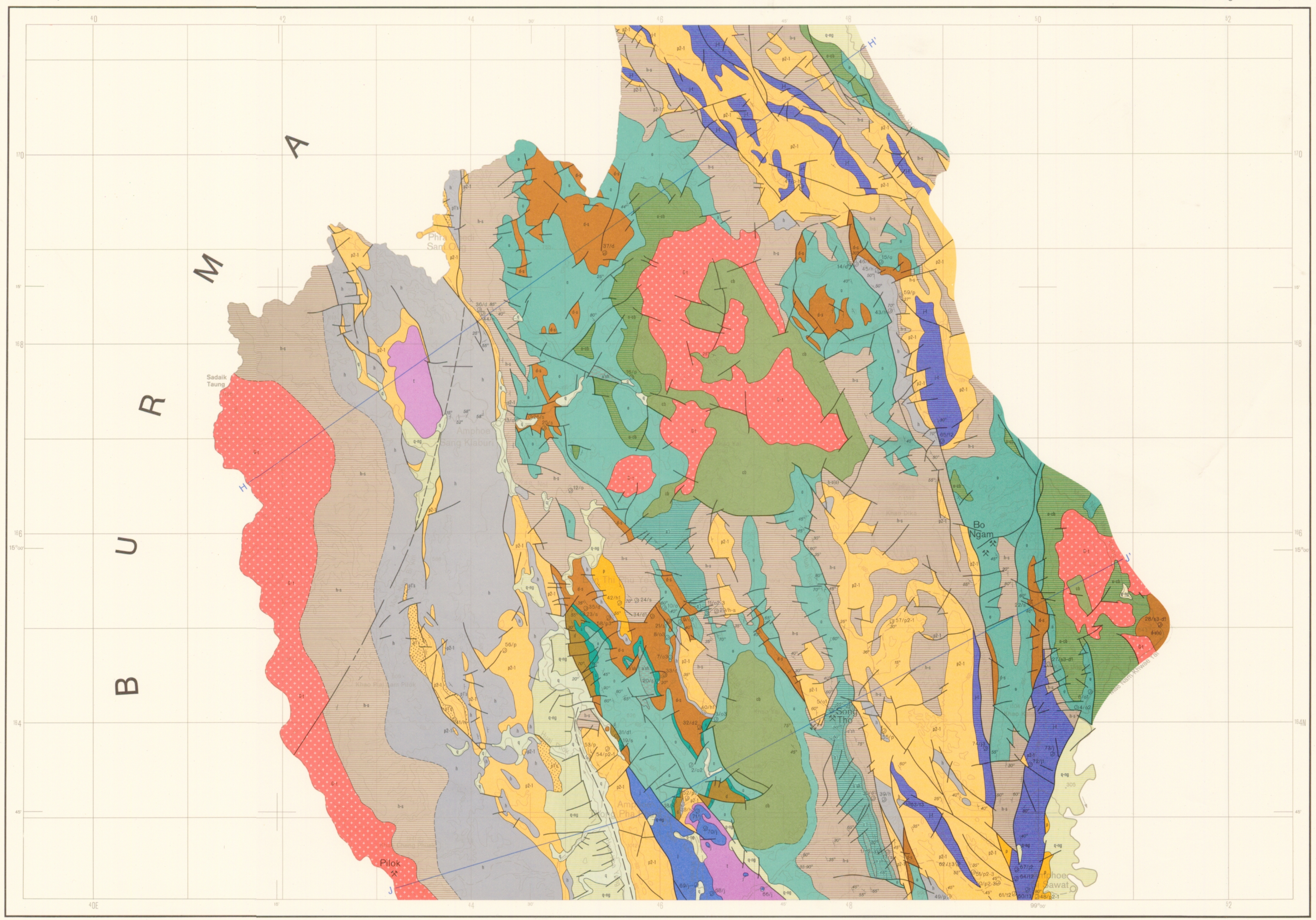


# Geological Map of Northern Thailand 1 : 250 000

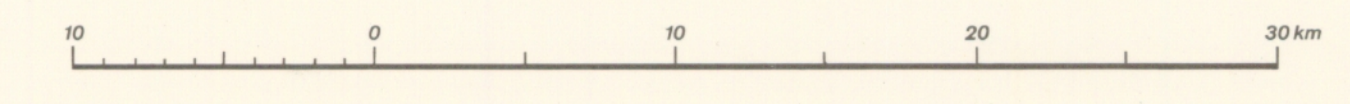
Compiled by K. E. Koch



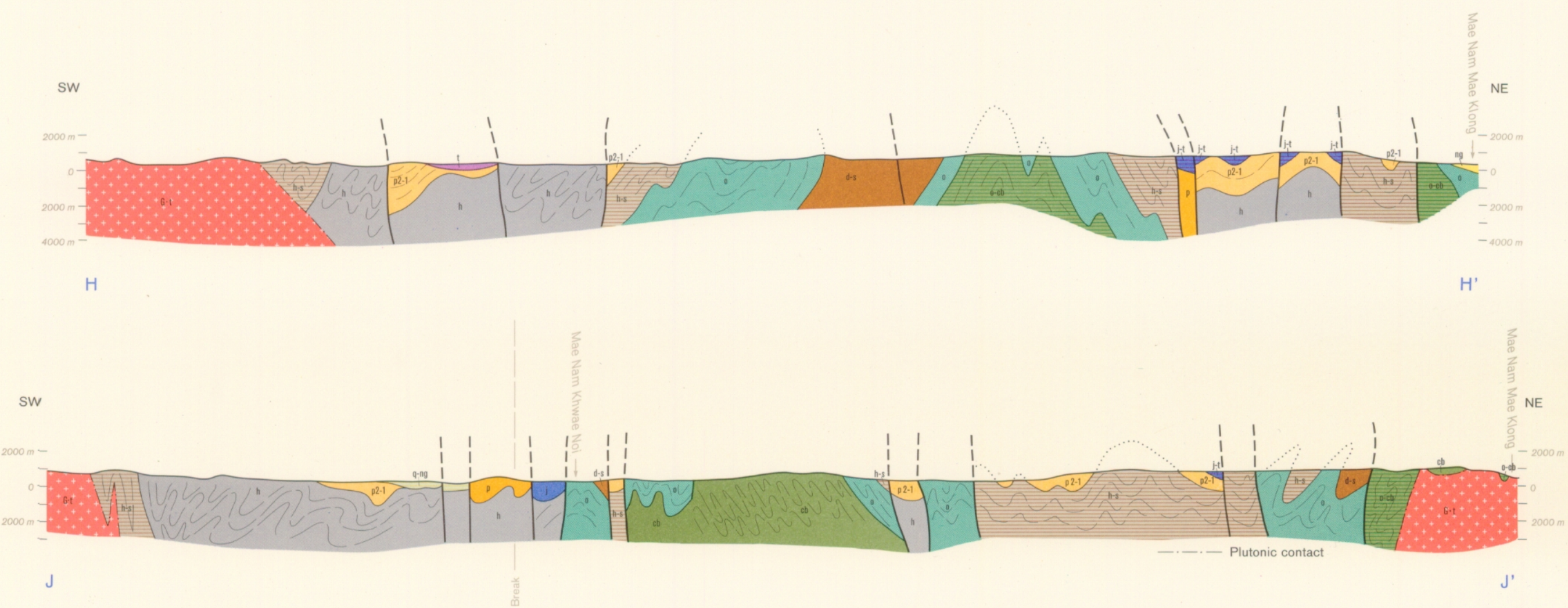
Topographical base: Thailand 1:50 000; First AMS Editions RTSD 1, 1965 (printed by Royal Thai Survey Department); Indochina and Thailand 1:250 000, US Army Map Service, Far East, 1964  
 Lithography and printing: Erich Hornung, Kartographische Anstalt, D-3005 Hemmingen 1

Hannover 1978

© Federal Institute for Geosciences and Natural Resources  
 printed in Germany (Federal Republic), 1978; Cartography: S. Grätlich  
 Sale: Geo Center, Box 80/08-30, D-7000 Stuttgart 80



Transverse Mercator Projection



Age	Sediments		Volcanics		Plutonics	
	Symbol	Code	Symbol	Code	Symbol	Code
Neozoic	Holocene	h				
	Quaternary	q				
	Pleistocene	pl				
	Neogene	ng				
Tertiary	Paleogene	pg				
	Cretaceous	cr				
Mesozoic	Jurassic	ju				
	Upper	ju 1				
	Triassic	tr				
	Middle	tr 1				
	Lower	tr 2				
Paleozoic	Permian	pr				
	Upper	pr 1				
	Middle	pr 2				
	Lower	pr 3				
	Carboniferous	cf				
	Upper	cf 1				
	Lower	cf 2				
	Devonian	dv				
	Silurian	sl				
	Ordovician	or				
Cambrian	cb					
Precambrian	prcb					

Facies: gr gravel, s sand, ss sandstone, sh shale, ls limestone, ch chert, sl slate, pgn paragneiss, cg conglomerate, gw greywacke, mb marble, ff full

Only those formations that appear in the region covered by this sheet are coloured in the legend.